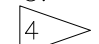
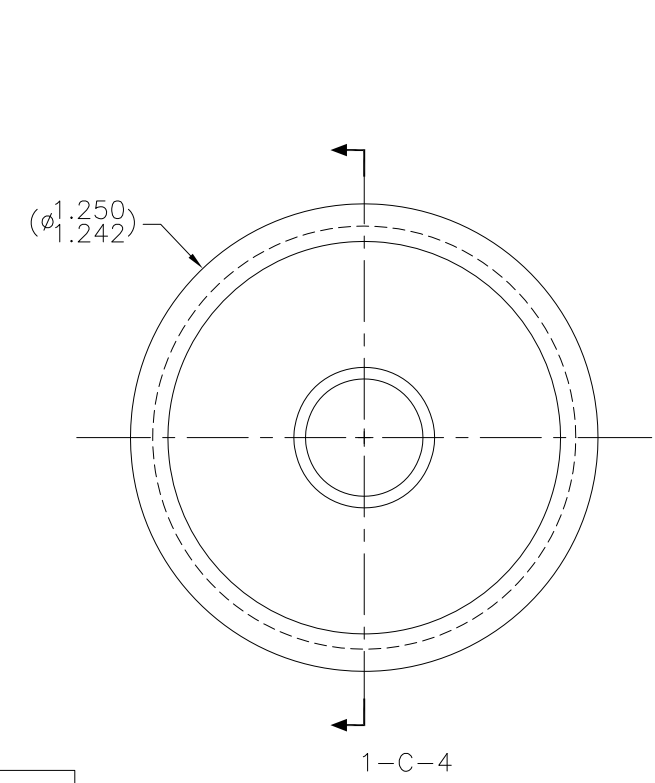


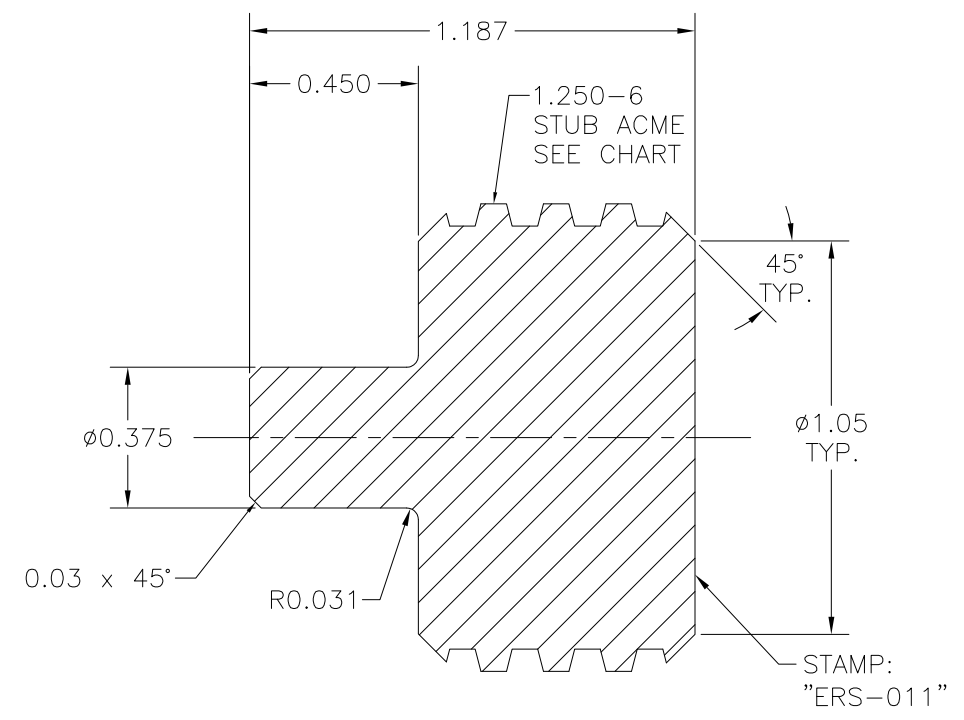
NOTES:

1. MATERIAL: BAR, 17-4PH/15-5PH,  $\phi$ 1.250 x 1.187 LG.
2. HEAT TREAT: COMMERCIAL HT.
3. SURFACE TREATMENT: XYLAN COAT OR EQ.
4.  THREAD TRUNCATION TAPERED SMOOTHLY AT BOTH ENDS.
5. WEIGHT: 0.24 LBS.

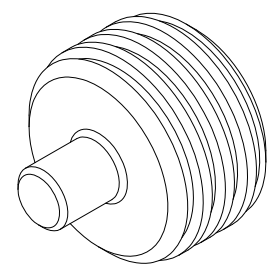
REVISIONS				
NO	DESCRIPTION	DATE	BY	APR/DATE
0	ISSUED FOR MANUFACTURE	05/12/10		



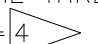
END VIEW 1-C-6  
JACK SCREW



SECTION 1-C-4  
REF. 1-B-4



PICTORIAL 1-C-2  
JACK SCREW  
N.T.S.

1.250-6 STUB ACME THREAD EXTERNAL 		
MAJOR DIAMETER, MAX.	-	1.250
MAJOR DIAMETER, MIN.	-	1.242
PITCH DIAMETER, MAX.	-	1.191
PITCH DIAMETER, MIN.	-	1.180
MINOR DIAMETER, MAX.	-	1.130
MINOR DIAMETER, MIN.	-	1.120
BASIC THREAD HEIGHT	-	0.050
BASIC WIDTH OF CREST	-	0.068
THREAD PITCH	-	0.167
WIRE SIZE	-	0.092
OVER WIRE DIAMETER MAX.	-	1.328
OVER WIRE DIAMETER MIN.	-	1.318

TOLERANCES: UNLESS OTHERWISE SPECIFIED 0.X ± 0.030 0.XX ± 0.010 0.XXX ± 0.005 ANGLES ± 1/2° BREAK EDGES 0.015 x 45° MIN. FINISH $\sqrt{125}$ $\sqrt{0.010}$ A ALL DIMS ARE IN INCHES, UNLESS NOTED OTHERWISE.	PROPRIETARY NOTICE THIS DRAWING AND THE INFORMATION IT CONTAINS ARE CONSIDERED CONFIDENTIAL, AND MAY NOT BE REPRODUCED, COPIED OR USED, IN PART OR IN WHOLE, WITHOUT PRIOR WRITTEN CONSENT.	<b>Integrated Ocean Drilling Program</b> TEXAS A&M UNIVERSITY 1000 DISCOVERY DRIVE COLLEGE STATION, TX 77845			
		SHEET 1 OF 1 SCALE 1:4 BY KM DATE 03/31/10	TITLE JACK SCREW SYSTEM ASSEMBLY 3" ERS CHECKED JCS APPROVED TP	SIZE D P/N ERS-011	REV. 0